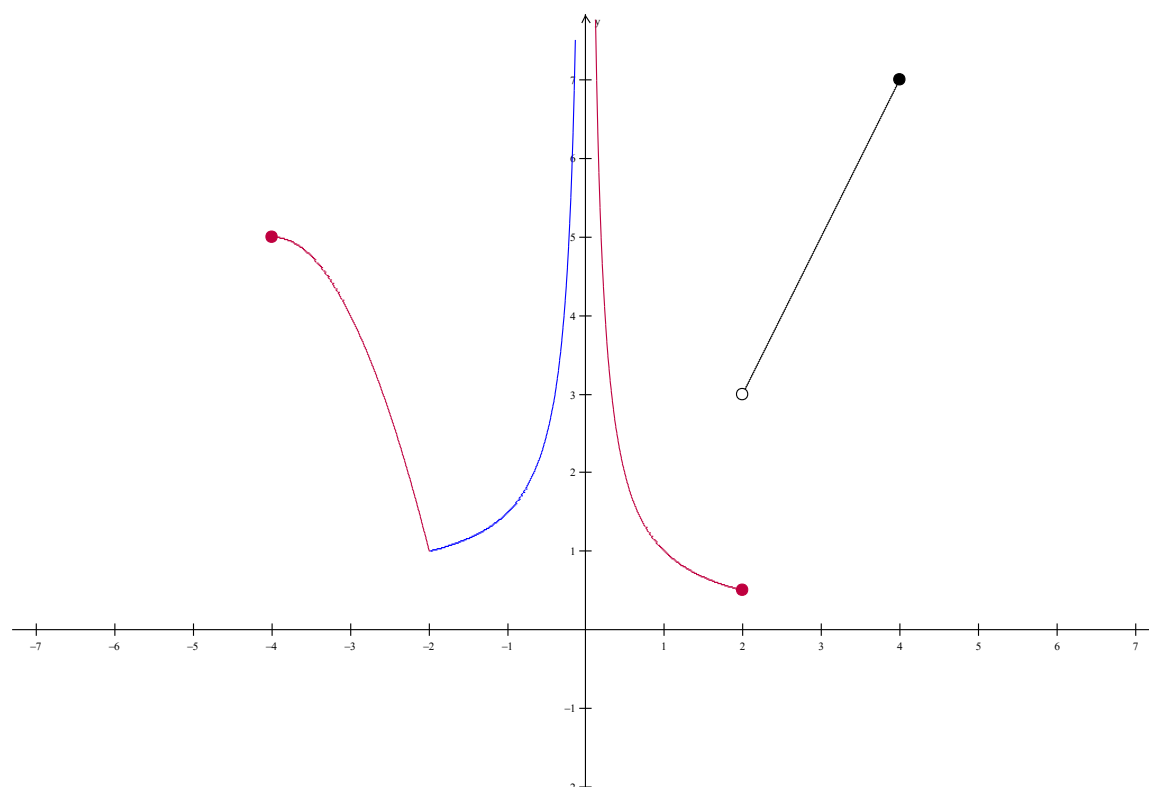


Name: _____ Period: ____ Date: _____

Evaluating Limits Graphically - #1

Directions: Answer the questions about limits of the function using the graph. Some groups will present their results to the class when we're finished.



$$\lim_{x \rightarrow -2^-} f(x) =$$

$$\lim_{x \rightarrow 0^-} f(x) =$$

$$\lim_{x \rightarrow 2^-} f(x) =$$

$$\lim_{x \rightarrow -2^+} f(x) =$$

$$\lim_{x \rightarrow 0^+} f(x) =$$

$$\lim_{x \rightarrow 2^+} f(x) =$$

$$\lim_{x \rightarrow -2} f(x) =$$

$$\lim_{x \rightarrow 0} f(x) =$$

$$\lim_{x \rightarrow 2} f(x) =$$

$$f(-2) =$$

$$f(0) =$$

$$f(2) =$$